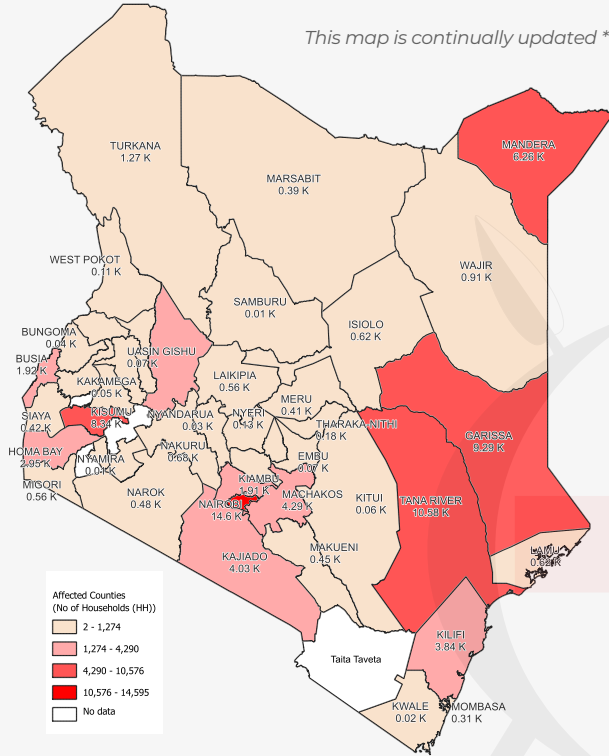


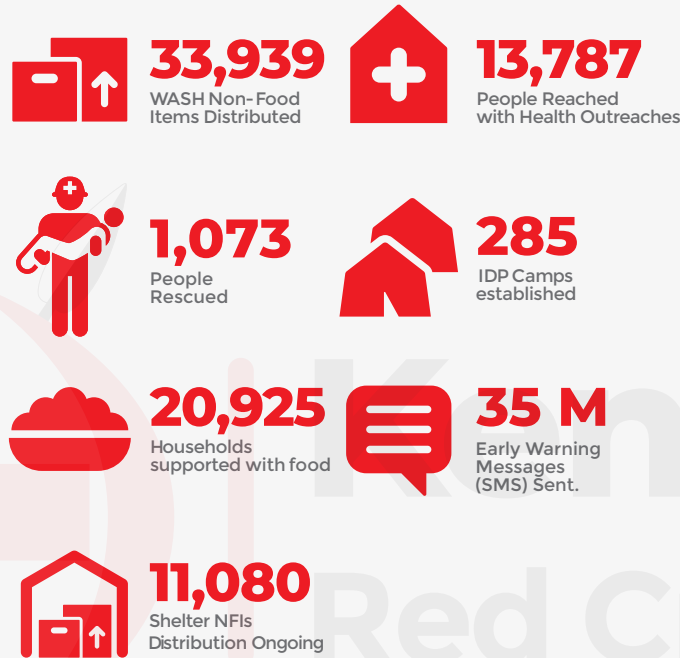
# 2024 March-April-May Rains FLOODS UPDATE

as of 27.05.24

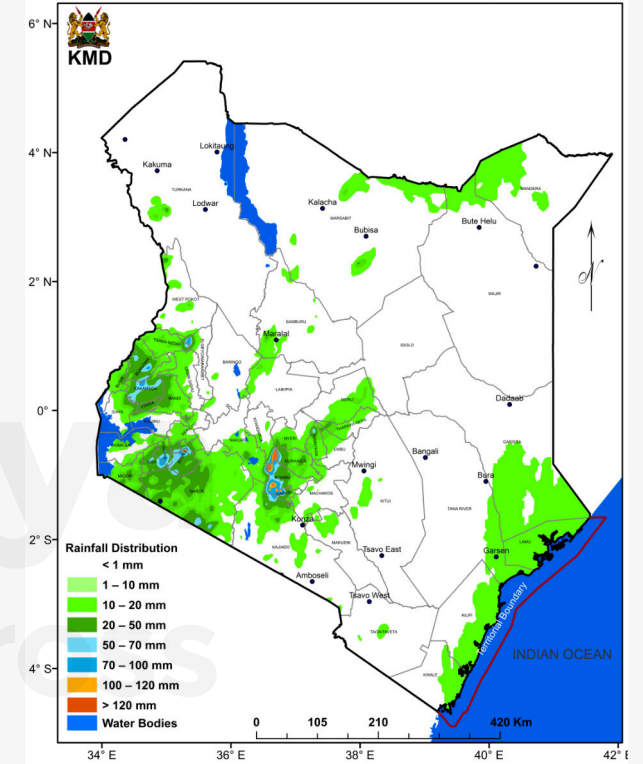
## AFFECTED AREAS



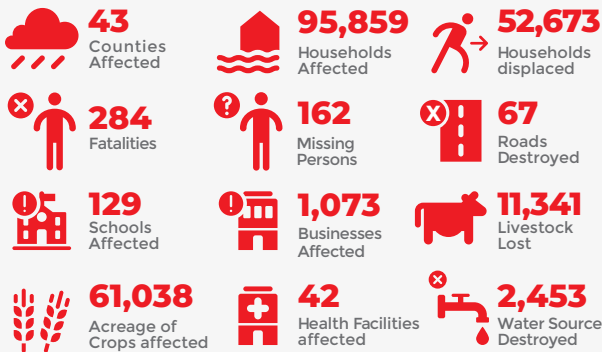
## KENYA RED CROSS INTERVENTIONS



## RAIN FORECAST 28th May - 3rd June



## FLOODS IMPACT



## WHAT TO EXPECT

**Heavy Rainfall:** Heavy rainfall of more than 30mm in 24hrs pounding several parts of the Lake Victoria Basin, the Rift Valley, Highlands West and East of the Rift Valley including Nairobi area is expected to continue from 19th May, 2024. The heavy rainfall is predicted to intensify to more than 40mm in 24hrs over the Rift Valley, Highlands West and East of the Rift Valley including Nairobi area, Lake Victoria Basin and off coast on 20th to 21st May, 2024. It is likely to reduce in intensity on 22nd May 2024 inland but intensify along the coast from 22nd to 24th May. The heavy rainfall is likely to be accompanied by gusty winds, large Ocean Waves in the Indian Ocean and strong southerly winds in the eastern region.

### COLD TEMPERATURES

Average night-time (minimum) temperatures will be low (less than 10°C) over some parts of the Highlands East of the Rift Valley.

## ADVISORY

Communities are advised to be on the lookout for potential floods, flash floods and poor visibility. The water levels in rivers, lakes and dams are expected to remain high.

Avoid driving through, or walking in moving water or open fields and not to shelter under trees and near grilled windows to minimize exposure to lightning strikes.

People in landslide prone areas especially over hilly areas should be vigilant.

Strong winds may blow off roofs, uproot trees and cause structural damages

Large waves may affect marine activities.

Call KRCS toll free number **1199** for emergency support.